

Thanks to our technical service centres network and spare parts distribution points, we offer a competent and reliable service, designed according to the needs of the market, which ranges from preliminary advice during the project phase, up to on-site technical assistance service. In particular, we offer pre-sales services for customized solutions, qualified after sales technical assistance, specialized training for the installer and the designer.

PHONE  
+39 0445 380021

E-MAIL  
info@saccardo.com




**Pre-sales assistance for customized solutions**

When it comes to dealing with special projects, we offer a consulting service in the design phase, ensuring assistance also in the compilation of necessary papers. We have a specialized team that studies the project based on the customers' needs, both in terms of solution architecture, and product customization.



**Training courses for the sales network**

- Dedicated area of the company to technical training courses on the entire range of products, offered to customers, external technicians and commercial partners of Saccardo
- Training courses during tests and start-ups




**After-sales phone assistance**

Our staff is always at your disposal through customer service phone assistance, thanks to our service centres or as support in case of on-site interventions, start-ups and plant management.



**Scheduled maintenance**

- Scheduled maintenance contracts made to act on vital parts of machineries • Machines equipped with "warning " to warn about the need to perform maintenance



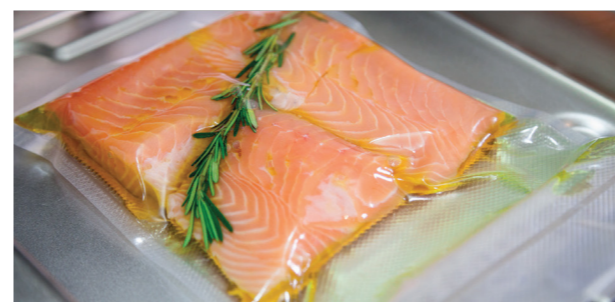
**Automated logistic**

Two automated warehouses with 80 drawers available for orders of spare parts.

## PACKAGING SOLUTIONS

We offer packaging solutions for different food sectors and for each specific step of production, interpreting the requests of each customer and offering the most suitable solutions based on production needs.

Many years of experience in the packaging sector, a constant search for more and more efficient technical solutions with low environmental impact and an attention to every functional and aesthetic detail, make us the excellence partner in vacuum packaging.



SACCARDO reserves the right to make any changes to this document at any time. You may not even partially reproduce this document.



Saccardo Arturo Figli s.r.l.  
Unipersonale  
Headquarter Via del Lavoro, 15 36016 - Thiene (VI) - Italy

Customer service centre  
Via dell'Industria, 15 36016 - Thiene (VI) - It



## SINGLE CHAMBER VACUUM PACKING MACHINE

### CELO-SACC SV-52-40-B



# CELO-SACC

## SV-52-40-B

QUALITY GUARANTEE IN THE VACUUM PACKAGING



### FEATURES

Manual tabletop vacuum packing machine.

Main structure entirely made of stainless steel, equipped with fixed feet for an easier installation on the working surface.

### DETAILS THAT MAKE THE DIFFERENCE

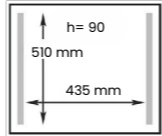
#### CHECK PANEL

Developed with a functional and intuitive design, the panel has digital selectors for an easy setting, controlled by led.

#### STRUCTURE

The attention to every single detail and the reliability of the stainless steel structure make SV-52-40-B a high-quality product with high performance. Surfaces are perfectly coupled, precise in movements and easy sanitisable.

### TECHNICAL FEATURES

Nr. of sealing	2 parallel sealing bars
Sealing bars'	
Lid height:	150 mm
Weight:	85 kg
Sealing:	Sealing with bottom seal wire and top contrast
Machine's control	Digital control panel
Vacuum pump:	20 m <sup>3</sup> /h vacuum pump placed inside machine's body
Voltage:	220V 50 Hz mono phase
Overall dimen-	645x650x485 h mm

#### OPTIONAL:

- Gas injection system;

### USEFUL ACCESSORIES TO COMPLETE THE PRODUCTION LINE

#### Thermoshrinking dip tank

Efficiency and durability make Saccardo's hot water shrinking devices an essential element of the vacuum packing process, as they are used to improve the sealing and look of the product's packaging.

TECHNICAL FEATURES	VECT 45-60	VECT 80-60
Overall dimensions:	670 x 700 x 1240 h mm	930 x 850 x 1240 h mm
Weight:	130 kg approx.	150 kg approx.
Immersion belt dimensions:	500 x 600 mm	600 x 800 mm
Immersion depth:	250 mm	250 mm
Water tank capacity:	140 l. approx.	180 l. approx.
Voltage:	380V - 50Hz three phase + neutral	380V - 50Hz three phase + neutral

